



www.rowanparkcare.co.uk info@rowanparkcare.co.uk

INTRODUCTION

Message From Our Manager

As we move through the early part of the year, it has been great to see so much activity and engagement across the home. The change in season is beginning to show, and there is a real sense of looking ahead, particularly with our outdoor spaces and new activities starting to take shape.

What stands out most is the way residents, staff and families continue to come together to make Rowan Park a warm and welcoming place to be. Whether it's through shared celebrations, trying something new, or simply spending time together, these moments all contribute to daily life in the home.

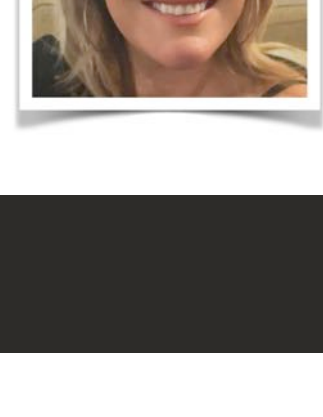
Thank you, as always, for your continued support. We hope you enjoy reading about what we've been up to.

If you know someone who would like to receive our email newsletters/updates just let us know, or forward them the newsletter sign up link below:

[Newsletter Sign Up Form](#)

Best wishes,

Leanne Terry
Home Manager



ACTIVITIES & EVENTS

Live Entertainment

We were delighted to welcome a fantastic Blues Brothers duo to the home for an afternoon of live entertainment. Their performance brought great energy into the room, with a mix of well-known songs that many residents enjoyed singing along to.

It was lovely to see so many people getting involved, with a few even taking to the floor for a dance. Events like this always create a positive atmosphere and give everyone something to look forward to.

We are very grateful to the performers for taking the time to visit us and hope to see them again in the future.



Cheltenham Races

Residents also took part in celebrating the Cheltenham Races from the comfort of the home. The occasion was marked with themed activities, including the chance to wear hats and enjoy a glass of fizz.

It was a good opportunity for residents to get involved in something seasonal and have a bit of fun together, with plenty of discussion around the races and favourites.



Gardening Club

We were pleased to launch our new Gardening Club, with the first session already proving to be a success. Residents joined our gardener Joe to begin planting seeds in preparation for spring.

The session sparked plenty of conversation, with residents sharing their own gardening experiences and memories. It was a relaxed and enjoyable way to spend time together while also working towards something that will grow over the coming weeks. We look forward to continuing the club and seeing how the garden develops.



Pottery Session

Residents and staff recently took part in a pottery session, which gave everyone the opportunity to try something a little different. The session was hands-on and relaxed, allowing people to work at their own pace.

It was encouraging to see residents getting involved, trying new skills, and taking pride in what they created. Activities like this provide both a creative outlet and a chance to spend time together in a different way.



SEASONAL EVENTS

Valentine's Day

Valentine's Day gave us the chance to focus on the importance of connection, friendship and kindness within the home. The day was marked with simple activities, treats, and time spent together.

It was a reminder that these everyday interactions don't need to be large or planned in detail – often it is the smaller, everyday moments that matter most. Sharing a cup of tea, having a chat, or spending time with others all contribute to the sense of community within Rowan Park.



St Patrick's Day

St Patrick's Day was marked with a lively celebration in our bistro area. Residents enjoyed a relaxed afternoon with music, refreshments, and a chance to come together socially.

There were plenty of decorations around the room, and some residents chose to dress for the occasion, which added to the atmosphere. A glass of Guinness and some familiar songs helped bring the day together, with many joining in for a singalong.

It was a simple but enjoyable way to mark the day and spend time together.



EXTERNAL LINKS

Social Media

Make sure to check out the Rowan Park Care Home Facebook Page for all our latest photos!

[Don't Forget To 'Like' Us!](#)

Leave A Review

We would be very grateful if you could spare a few minutes to write a review for us:

[Carehome.co.uk](#) & [Google Reviews](#)

